



+



=

Digital Subscription

subscribe to
THE ART NEWSPAPER

[click here](#)

THE ART NEWSPAPER

[Home](#) | [News](#) | [Museums](#) | [Features](#) | [Market](#) | [Books](#) | [Conservation](#) | [Opinion](#) | [Video](#)

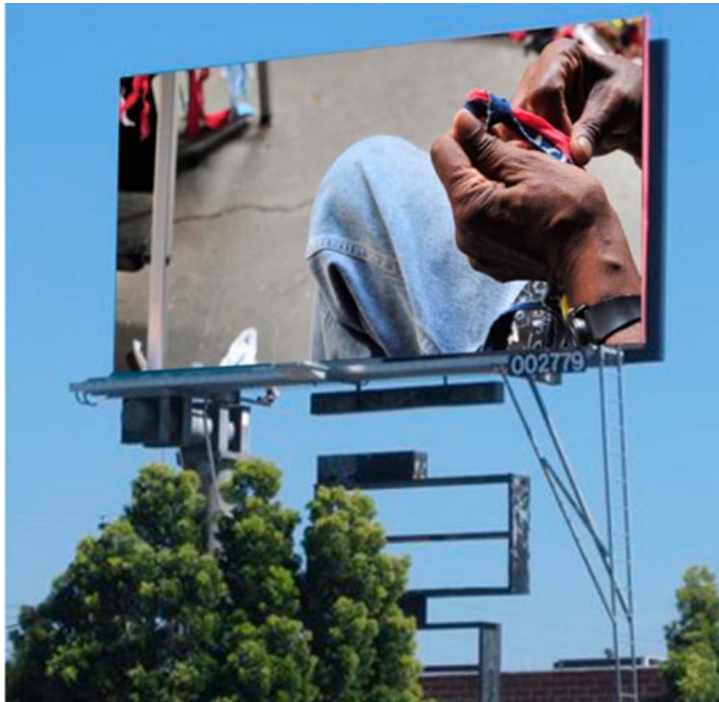
[FAIRS](#) | [ISSUES](#) | [JOBS](#) | [ARCHIVE](#) | [WHAT'S ON](#) | [SUBSCRIBE](#) | [ADVERTISE](#)

[Login to the digital edition](#) | [Sign up for the digital edition](#)

Friday 30 Sep 11

Public art on the rise in Los Angeles Major artists projects and performances planned for PST

By Bonnie Rosenberg | Web only
Published online 30 Sep 11 ([News](#))



As part of his show at LAXart, John Outterbridge has created a site-specific public billboard

Large-scale public works are popping up in Los Angeles and many promise to be hard to miss. This is largely down to a growing number of organisations that focus on public art, such as West of Rome Public Art and Los Angeles Nomadic Division, according to Kris Kuramitsu, the production manager of the Pacific Standard Time Performance and Public Art Festival. Furthermore, working outdoors often allows galleries and organisations to realise artists' projects more quickly. According to Lauri Firstenberg, the director of LAXART, temporary public projects bypass the red tape associated with permanent public art. "We have been able to move more swiftly, often realising an artist's first project in the public realm," she said. Here is a selection of public works on view:

A billboard by John Outterbridge on La Cienega Boulevard is part of the sculptor's solo exhibition, "The Rag Factory", at LAXART, the non-profit space founded in 2005 (until 22 October). The installation is part of LAXART's Public Domain programme, which produces projects in unconventional contexts.

Land artist Michael Heizer's *Levitated Mass*, conceived in 1969, is due to go to the Los Angeles County Museum of Art (Lacma) in November. The 340 tonne, 21 ft-tall boulder, which Heizer found in a quarry in Riverside, California, is due to be installed in a 456 ft-long trench behind the museum's Resnick Pavilion. The piece will become part of the museum's

Watch on theartnewspaper.tv:



[Intelligent, uninformed public art](#)

Comments:

Also in News:

- [Looking back on LA's early art scene](#)
- [Delays plague the opening of LA's light railway](#)
- [Alexander McQueen show for London?](#)
- [Outrage at Sarkozy's Versailles choice](#)
- [Pistoletto rethinks Bordeaux](#)

Also by Bonnie Rosenberg:

- [NEA launches \\$11.5m arts initiative to boost local economies](#)
- [Plans for Ground Zero Islamic centre stalled](#)
- [New York connects artists with senior citizens](#)
- [Martin Luther King unveiling postponed](#)
- [Art law update](#)

Share this:

- Google Bookmark
- del.icio.us
- facebook
- Stumbledupon
- Twitter

- [New York's great museums could do better](#)
- [Hidden Goya portrait discovered](#)
- [Alexander McQueen show for London?](#)
- [To charge or what to charge?](#)
- [Silence from South African art world following Venice Biennale controversy](#)



+



Latest 3 issues online, exactly as printed

=

Digital Subscription



VCARS.CO.UK
OVER
120,000 CARS
FOR SALE



FREEMAN'S
Auction 10/07/11

collection.

Pacific Standard Time's Public and Performance Art Festival (19-29 January 2012) is due to include the restaging of a selection of works originally created by Los Angeles artists between 1945 and 1980:

Lacma, together with University of California, Los Angeles' (UCLA) Chicano Studies Research Center and Fowler Museum, has commissioned a mural by Willie Herron, inspired by art collective Asco's 1972 *Walking Mural* performance. Visitors will be able to take bus tours to the historic murals in the east of the city.

LAXART and the Getty Research Institute are recreating Mark di Suvero's *Artists' Tower of Protest*, 1966, a six-storey structure built by di Suvero and fellow artists Lloyd Hamrol, Ed Bereal, Mel Edwards and Judy Chicago. The work was originally erected on a plot on Sunset Boulevard to protest against the Vietnam War. The 2012 version will feature new works by some of the project's original participants as well as mid-career and emerging artists who have not been selected yet.

Materials & Applications, a Los Angeles architecture and landscape research centre, will reinvent *Disappearing Environments*, a 1966 project by Judy Chicago, Lloyd Hamrol and Eric Orr. The piece stacks 37 tonnes of dry ice into a temporary public sculpture, which emits a fog that grows as the blocks slowly evaporate. It will sit at the entrance of the Art Los Angeles Contemporary fair at Barker Hanger.

More from The Art Newspaper

Newsletter and alerts: [Digital edition:](#) the complete weekly and breaking news email

[latest issue,](#) exactly as it was printed

The Art Newspaper TV: reports, interviews and features



ALZHEIMER'S DISEASE HAS THEM
NEEDING YOU MORE THAN EVER.
WE NEED YOU TOO.

If you care for someone with Alzheimer's,
click here to look into our research study.

www.SummitADstudy.com Ads by Google

Comments

[Post comment](#)

Home	Jobs
News	What's On
Museums	Sister Editions
Features	Retailers
Art Market	About
Fairs	Testimonials
Books	Allemandi Publishing
Current	Contact
RSS	Privacy Statement
TV	Site Map

[Subscribe to The Art Newspaper...](#)

[Advertise in The Art Newspaper Network...](#)

[Sign up to receive the weekly email newsletter...](#)

[Search through The Art Newspaper Archive...](#)

[Contact the team at The Art Newspaper...](#)